

IP PBX



UC120

60 SIP Users, 15 Concurrent Calls
2 FXO, 1 LTE (optional)
IP/SIP Failover



UC200

500 SIP Users, 30 Concurrent Calls
2 FXS, 2 FXO
Complete PBX Features



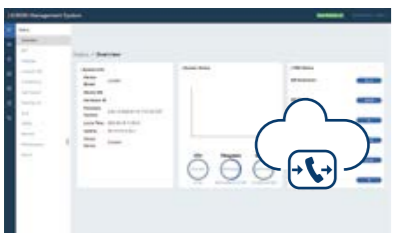
UC350

1,000 SIP Users, 200 Concurrent Calls
Modular Design
Max 32 FXS/FXO or 4 E1s
Complete PBX Features



UC1500/UC2500

Open Hardware Platform based-on X86
Easy to Install 3rd-party IP PBX
Open IP PBX Appliances



UC8000

Up to 20,000 SIP Extensions
Up to 4,000 Concurrent Calls
On-premise or Cloud
High Availability
Easy to Scale

IP Phone



C66G/C66GP

20 SIP Accounts
4.3" 480×272 Pixel Color Display
HD Audio
Dual Gigabit Network Ports with PoE
LDAP, XML Phone Book
50 Line Keys
USB Port: USB2.0*1



C64G/C64GP

16 SIP Accounts
3.5" 480×320 Pixel Color Display
HD Audio
Dual Gigabit Network Ports
LDAP, XML Phone Book
40 Line Keys
USB Port: USB2.0*1



C63G/C63GP

6 SIP Accounts
2.8" 320×240 Pixel Color Display
HD Audio
Dual Gigabit Network Ports
LDAP, XML Phone Book
30 Line Keys



C62G/C62GP

6 SIP Accounts
2.4" 240×320 Pixel Color Display
HD Audio
Dual Gigabit Network Ports
LDAP, XML Phone Book
2 Line Keys



C61S/C61SP

2 SIP Accounts
2.3" 132×64 Pixel Graphic LCD with Backlight
HD Audio
Dual 10/100Mbps Network Ports
LDAP, XML Phone Book
2 Line Keys



C60U/C60UP

2 SIP Accounts
2.3" 132×64 Pixel Graphic LCD with Backlight
HD Audio
Dual 10/100Mbps Network Ports
LDAP, XML Phone Book
2 Line Keys

IP Phone



C60S/C60SP

2 SIP Accounts
2.3" 132×64 Pixel Graphic LCD
HD Audio
Dual 10/100Mbps Network Ports
LDAP, XML Phone Book
2 Line Keys



C60L/C60LP

2 SIP Accounts
2.3" 132×64 Pixel Graphic LCD
HD Audio
One 10/100Mbps Network Port
LDAP, XML Phone Book
2 Line Keys

Indoor Panel & Paging Gateway



DP70

Linux OS
7" TFT LCD Display
10/100Mbps Ethernet
Multi-Alarm Input
PoE



DP73

Android 5.1 OS
10" TFT LCD Display
10/100Mbps Ethernet
Multi-Alarm Input
Bluetooth/Wi-Fi



DPA

HD Audio
Onvif Video Linkage
DIY Intercom & Paging Solution
Easy Integration with PBX, NVR System

SIP Door Phone



DP81

HD Audio
Dual SIP Lines, Dual SIP Servers
Door Access: DTMF



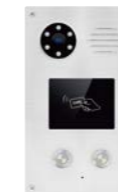
DP82

HD Audio
Dual SIP Lines, Dual SIP Servers
Door Access: DTMF, IC Card



DP83

HD Audio
1080p HD Camera
Dual SIP Lines, Dual SIP Servers
Door Access: DTMF



DP85

HD Audio
1080p HD Camera
Dual SIP Lines, Dual SIP Servers
Door Access: DTMF, IC Card



DP88

HD Audio
1080p HD Camera
2.3" Graphic LCD Display
Dual SIP Lines, Dual SIP Servers
Door Access: DTMF, Password, IC Card



DP90

HD Audio
Speed Dial
Touch Control DSS Key
Door Access: DTMF, IC Card



IP Communication Solutions

www.dinstar.com



Shenzhen Dinstar Co., Ltd. was founded in 2011. Listed on New OTC Market in China in 2016, Stock Code: 870319.



DINSTAR is a leading global provider of IP Unified Communications products. We have been delivering more agile, efficient and affordable communication solutions to our customers through our reliable, innovative and future-proof products. Now we have more than 200 employees.



Most of our specialists come from top-rank global telecommunication providers, who have dedicated themselves to VoIP, unified communications and wireless mobile network technology for more than 20 years.



Complete VoIP and IP communication products include IP Phones, IP PBXs, VoIP GSM/LTE 4G Gateways, Analog VoIP Gateways, Digital VoIP Gateways, Session Border Controllers, SIMBank & SIM Cloud, SIP Intercoms.



Broad compatibility with various vendors.



Shenzhen Dinstar Co., Ltd.

T +244 990 575 701
F +244 921 9335335
E vendas-dinstar@valenceedge.co.ao
W www.valenceedge.co.ao

Avenida Pedro de Castro Van-dunem Loy, Talatona Belas Park, Edifício Solida Plaza (Torres BNI), C4, Luanda

FXS VoIP Gateway

DAG1000-1/2S
1/2 FXS Ports
IMS/NGN, SIP TLS
IPv4/IPv6, SNMP/TR069



DAG1000-4S
4 FXS Ports
IMS/NGN, SIP TLS
IPv4/IPv6, SNMP/TR069



DAG1000-8S
8 FXS Ports
IMS/NGN, SIP TLS/SRTP
IPv4/IPv6, SNMP/TR069



DAG2000-16S
16 FXS Ports
IMS/NGN, SIP TLS/SRTP
IPv4/IPv6, SNMP/TR069



DAG2000-24S/32S
24/32 FXS Ports, RJ11 & RJ21
IMS/NGN, SIP TLS/SRTP
IPv4/IPv6, SNMP/TR069



DAG3000-32S
32 FXS Ports, RJ45
Modular Design
IMS/NGN, SIP TLS/SRTP
SNMP/TR069



DAG2500-48/72S
48/72 FXS Ports, RJ21
IMS/NGN, SIP TLS/SRTP
SNMP/TR069



DAG3000-128S
128 FXS Ports, RJ45
Modular Design
IMS/NGN, SIP TLS/SRTP
SNMP/TR069



FXO VoIP Gateway

DAG1000-40/80
4/8 FXO Ports
IMS/NGN, SIP TLS/SRTP
IPv4/IPv6, Caller ID, SNMP



DAG2000-16O
16 FXO Ports
IMS/NGN, SIP TLS/SRTP
IPv4/IPv6, Caller ID, SNMP



Hybrid VoIP Gateway

DAG1000-4S4O
4 FXS & 4 FXO Ports
Power Failure Bypass
IMS/NGN, SIP TLS/SRTP



DAG2000-8S8O
8 FXS & 8 FXO Ports
Power Failure Bypass
IMS/NGN, SIP TLS/SRTP



DAG3000-32S/O
4 Slots, 8 FXS/FXO Ports per slot
IMS/NGN, SIP TLS/SRTP
IPv4/IPv6, Caller ID, SNMP



DAG3000-128S/O
16 Slots, 8 FXS/FXO Ports per slot
IMS/NGN, SIP TLS/SRTP
IPv4/IPv6, Caller ID, SNMP



Digital Media Gateway

MTG200
1/2 E1/T1 Ports
SIP UDP/TCP/TLS
ISDN PRI/SS7/R2



MTG1000
1/2 E1/T1 Ports
SIP UDP/TCP/TLS
ISDN PRI/SS7/R2



MTG2000
4/8/12/16/20 E1/T1 Ports
SIP UDP/TCP/TLS, PRI/SS7/R2
1+1 Redundant Power Supplies



MTG2000B
4/8/12/16 E1/T1 Ports
SIP UDP/TCP/TLS, PRI/SS7/R2
1+1 Mainboard Redundancy
1+1 Redundant Power Supplies



MTG3000
63 E1 Ports, STM-1 155M
SIP UDP/TCP, PRI/SS7
1+1 Redundant Power Supplies



MTG5000
64 E1/T1 Ports
Up to 1,920 Concurrent Calls
ISDN PRI/SS7/R2, SIP UDP/TCP



Session Border Controller

SBC300
5 to 50 SIP Sessions
50 Transcoding Sessions
1+1 Hardware Redundancy (HA)



SBC1000
50 to 500 SIP Sessions
200 Transcoding Sessions
1+1 Hardware Redundancy (HA)



SBC3000
500 to 2,000 SIP Sessions
1200 Transcoding Sessions
1+1 Hardware Redundancy (HA)



SBC8000
Up to 10,000 SIP Sessions
Up to 5,000 Transcoding Sessions
High Availability



GSM/LTE VoIP Gateway

UC2000-VE
4/8 GSM/LTE Channels
Voice/SMS/USDD
HTTP SMS API/SMPP



UC2000-VF
16 GSM/LTE Channels
Voice/SMS/USDD
HTTP SMS API/SMPP



UC2000-VG
32 GSM/LTE Channels
Voice/SMS/USDD
HTTP SMS API/SMPP



UC2000-VH
64 GSM Channels
Voice/SMS/USDD
HTTP SMS API/SMPP



Multi-SIM VoIP Gateway
8/16/32 GSM/LTE Channels
4 SIM Slots per Channel, SIM Rotation
HTTP SMS API/SMPP



SIMBANK / SIMCLOUD
128/512 SIM Card Slots
Remote SIM Management
SIMCloud/SIM Server

